

PARTS-PUBLISHER Tablet Catalogue

Spare part catalogue for tablet PCs and smartphones

Smartphones and tablets are increasingly being used – even in the fields of customer service and maintenance. Therefore the technical writers of many companies are faced with the challenge to provide service and spare part documentation so it can be used with mobile devices.

No additional work

For Docware customers the “How” is not the question because Docware offers a standard application especially for tablets and smartphones. With the solution called “PARTS-PUBLISHER Tablet Catalogue” technical writers do not have any extra work when they produce catalogues for tablets or smartphones in addition to printed spare parts catalogues or ones on CD or the Internet. This means no matter whether the parts documentation is to be displayed on conventional PCs, on tablets or smartphones, no additional effort will occur for the technical writers. No special knowledge is required. Irrespective of the publishing media only a few mouse clicks are needed from the import of the catalogue data to the completed catalogue. A media-specific data processing is not necessary.

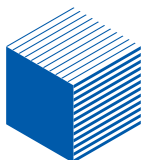
Spare part information at the touch of a fingertip

- PARTS-PUBLISHER inventory catalogues for direct use
- Gesture control (e.g. tapping and swiping)
- Multi-touch screens (for zooming drawings)
- Split views (better utilisation of screen size)
- Automatic hardware detection

User interface optimised for touch screens

The user interface of the PARTS-PUBLISHER Tablet Catalogue version has been adapted specially for touch screen control and supports intuitive finger operation. A large number of the PARTS-PUBLISHER catalogue functions for conventional PCs are also available in the

touch screen version. Linked parts lists and drawings as well as detailed information on list items and documents are displayed by tapping and swiping the screen. Required parts can be ordered directly from the catalogue via e-mail or a linked shop. An integrated search function makes it easier to locate required parts or service documents.



DOCWARE

Features:

Automatic adaptation to the screen size, orientation and device type

Display of parts lists and drawings

Parts lists, detailed information on list items and drawings are displayed by tapping and swiping the screen. Parts list items and hotspots in the drawing are bi-directionally linked. Drawings can be zoomed and moved via gesture control. Use of 3D models with Windows 8 (Pro).

The most important actions include:

- **Single tap in the parts list:** Selects this part or assembly and offers a function for scrolling automatically to the relevant hotspot in the drawing and displays a popup containing actions available for this parts list entry
- **Single tap in the drawing:** Selects this part or assembly and offers a function for scrolling automatically to the relevant parts list entry
- **Double tap in the drawing:** Navigates to this assembly or details about this part
- **Swipe to the left in the parts list:** Navigates to this assembly or details about this part
- **Swipe to the right in the parts list:** Navigates to the superior assembly

Documents

Descriptive documents such as installation instructions, repair instructions or other service documents can be downloaded and displayed in PDF, Word, Excel, HTML or XML format. A preview of the first page of a PDF is available without having to explicitly download the document. The user navigates in the document structure.

Search

The database fields for the search, e.g. part number, part description, etc. can be configured by the catalogue creator according to requirements.

The search is a combined search that runs in the catalogue and documents using the configured database fields and as a full text search in the documents.

When the catalogue user activates the search function, a convenient virtual keyboard appears on the touch screen to enter the relevant search terms into the search mask.

The search result is displayed in a hit list.

Order, shopping cart

The tablet version of PARTS-PUBLISHER has a simple shopping cart function with an e-mail option that allows users to order parts directly from the catalogue via e-mail or a linked shop (see below).

Shop integration

The tablet version of PARTS-PUBLISHER can be linked easily to PARTS-SHOP via an existing OCI (Open Catalog Interface). Consequently, all shop functions such as user management, login, shopping cart, etc. are available.

Multilingual capability

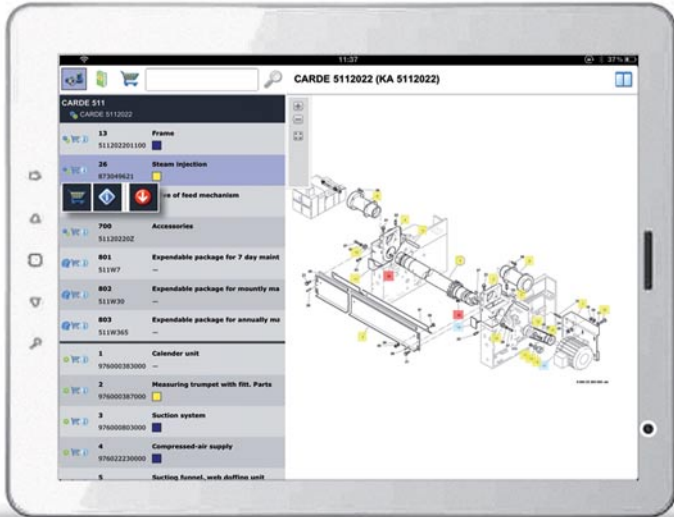
PARTS-PUBLISHER Tablet Catalogue supports Unicode. As a result, you can provide catalogues for your service technicians, dealers and customers in their national language (including Chinese, Japanese, Arabic, Russian, etc.). The language is selected when the catalogue is opened or configured in the shop.

Filter function

The catalogue author can configure filters that display a selective amount of data when the catalogue is opened. That is filters control data retrieved from one database to generate individual views. For example, if a serial number filter is configured and the user logs into the catalogue (using a shop), this filter only displays catalogue data linked to the serial number of the device that the catalogue user is operating.

Print function

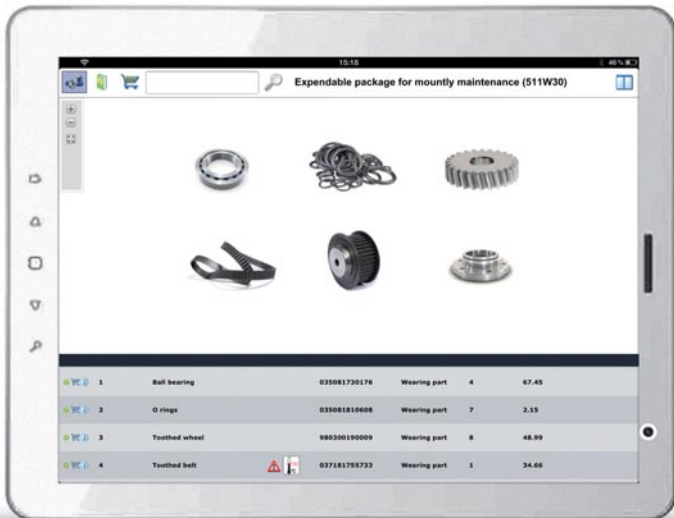
Catalogue content can be printed depending on the functions of the devices and browsers used.



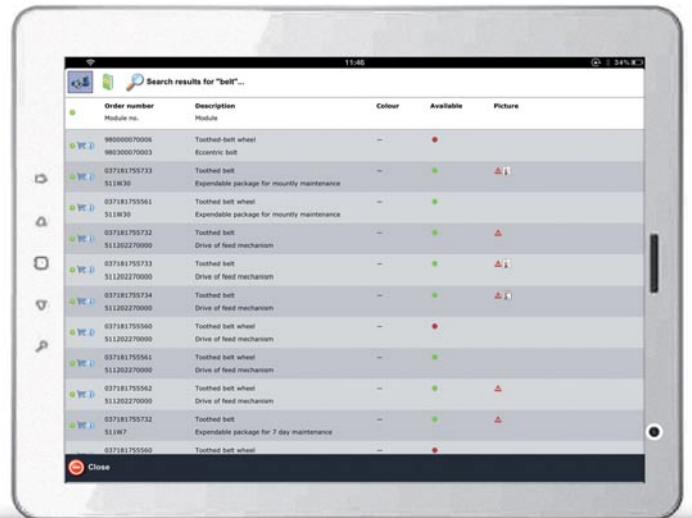
Split view: left parts list, right drawing



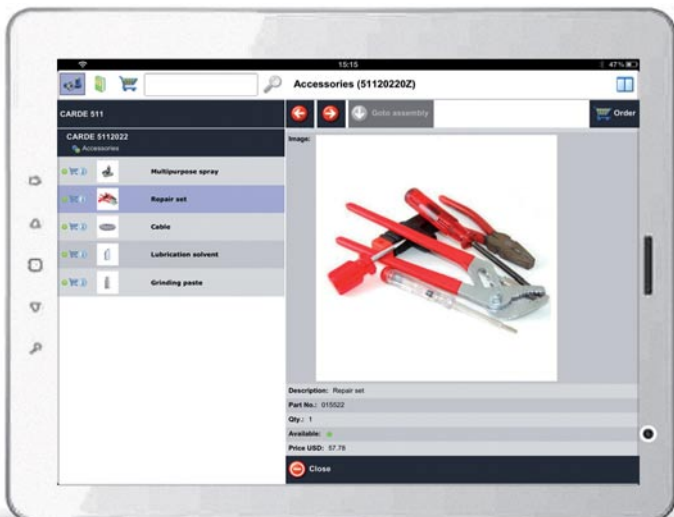
Search



Full screen view with parts list



Hit list for the search term



Left parts list with images, right details with image



Left document structure, right document

Supported devices and operating systems

Online:

Tablet PCs and smartphones with touch screen (e.g. Apple iPad, Apple iPhone, ASUS Transformer Pad, Samsung Galaxy, Windows 8 Tablet) with latest operating systems (iOS, Android and Windows 8 in particular) and browsers

- No installation required
- Possible to integrate backend shop

Offline:

Windows 8 (Pro) Tablets

- Optional with support of 3D (Use of 3D models in the catalogue)

V 1.7 Subject to technical modifications and error.

PARTS-PUBLISHER ist a registered trademark of Docware GmbH.

All trademarks and registered trademarks are the properties of the respective companies. © 2012 Docware GmbH. All rights reserved

Docware GmbH

Kaiserstr. 30

90763 Fuerth, Germany

Tel: +49-911-977 59-0

Fax: +49-911-977 59-99

E-Mail: info@docware.de

Web: www.docware.com



DOCWARE